

Il Carnevale di Venezia

N. PAGANINI
D. D'Amore

$\text{♩} = 120$

Chitarra 1

Chitarra 2

Chitarra 3

Chitarra 4

This system contains the first eight measures of the piece. It features four guitar staves. The key signature is one sharp (F#) and the time signature is 3/4. The tempo is marked as quarter note = 120. Chitarra 1 has a melodic line starting with a whole rest, followed by quarter notes G4, A4, B4, C5, D5, E5, F#5, G5, and a half note G5. Chitarra 2 plays a rhythmic accompaniment of quarter notes G4, A4, B4, C5, D5, E5, F#5, G5. Chitarra 3 plays a rhythmic accompaniment of quarter notes G4, A4, B4, C5, D5, E5, F#5, G5. Chitarra 4 plays a bass line of quarter notes G2, A2, B2, C3, D3, E3, F#3, G3.

9

Chit. 1

Chit. 2

Chit. 3

Chit. 4

This system contains measures 9 through 16. Chitarra 1 continues its melodic line with quarter notes G4, A4, B4, C5, D5, E5, F#5, G5, and a half note G5. Chitarra 2 continues its rhythmic accompaniment of quarter notes G4, A4, B4, C5, D5, E5, F#5, G5. Chitarra 3 continues its rhythmic accompaniment of quarter notes G4, A4, B4, C5, D5, E5, F#5, G5. Chitarra 4 continues its bass line of quarter notes G2, A2, B2, C3, D3, E3, F#3, G3.

18

Chit. 1

Chit. 2

Chit. 3

Chit. 4

This system contains measures 18 through 25. Chitarra 1 continues its melodic line with quarter notes G4, A4, B4, C5, D5, E5, F#5, G5, and a half note G5. Chitarra 2 continues its rhythmic accompaniment of quarter notes G4, A4, B4, C5, D5, E5, F#5, G5. Chitarra 3 continues its rhythmic accompaniment of quarter notes G4, A4, B4, C5, D5, E5, F#5, G5. Chitarra 4 continues its bass line of quarter notes G2, A2, B2, C3, D3, E3, F#3, G3.

27

Chit. 1

Chit. 2

Chit. 3

Chit. 4

Detailed description: The image shows a musical score for four chitarrini parts, labeled Chit. 1 through Chit. 4. The score is in G major (one sharp) and begins at measure 27. Each part consists of four measures. Chit. 1 has a melodic line with eighth and quarter notes. Chit. 2 has a rhythmic accompaniment of eighth notes. Chit. 3 has a rhythmic accompaniment of eighth notes. Chit. 4 has a bass line of dotted half notes. Each part has two endings, marked with '1' and '2' above the staff. The first ending of each part leads to the second ending, which then concludes the piece with a double bar line.

Il Carnevale di Venezia

N. PAGANINI
D. D'Amore

Chitarra 1

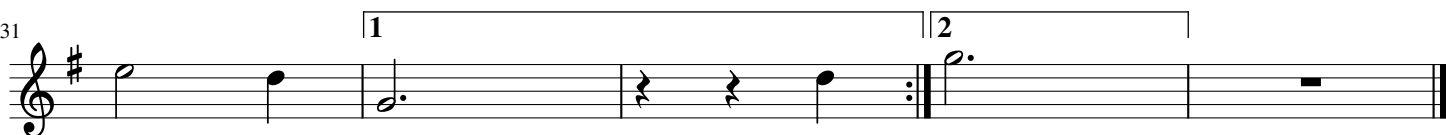
$\text{♩} = 120$



16



31



Il Carnevale di Venezia

N. PAGANINI
D. D'Amore

Chitarra 2
♩ = 120



14



27



Il Carnevale di Venezia

N. PAGANINI
D. D'Amore

Chitarra 3
♩ = 120



14



27



