

# TE DEUM

Charpentier

$\text{♩} = 120$

Flauto  
Clarinetto  
Sassofono  
Corno in Fa  
Tromba  
Timpani  
Violini  
Violoncelli

6

Fl.  
Cl.  
Sax.  
Cor. Fa  
Tr.  
Timp.  
Vl.  
Vcs.

11

Fl.  
Cl.  
Sax.  
Cor. Fa  
Tr.  
Timp.  
Vl.  
Vcs.

This system of musical notation covers measures 11 through 15. It features eight staves: Flute (Fl.), Clarinet (Cl.), Saxophone (Sax.), Cor Anglais (Cor. Fa), Trumpet (Tr.), Timpani (Timp.), Violin (Vl.), and Viola (Vcs.). The key signature is one sharp (F#). Measures 11-15 are marked with a large '11' at the beginning. The woodwind and brass parts (Fl., Cl., Sax., Cor. Fa, Tr., Timp.) are mostly silent, indicated by horizontal lines with bar rests. The Violin (Vl.) and Viola (Vcs.) parts are active, with the Violin playing a melodic line and the Viola providing a rhythmic accompaniment.

16

Fl.  
Cl.  
Sax.  
Cor. Fa  
Tr.  
Timp.  
Vl.  
Vcs.

This system of musical notation covers measures 16 through 20. It features the same eight staves as the previous system. Measures 16-20 are marked with a large '16' at the beginning. In this system, the woodwind and brass parts become more active. The Flute (Fl.), Clarinet (Cl.), and Saxophone (Sax.) parts have melodic lines. The Cor Anglais (Cor. Fa) and Trumpet (Tr.) parts also have melodic lines. The Timpani (Timp.) part has a rhythmic pattern. The Violin (Vl.) and Viola (Vcs.) parts continue with their respective parts.

21

Fl.  
Cl.  
Sax.  
Cor. Fa  
Tr.  
Timp.  
Vl.  
Vcs.

Detailed description: This system contains measures 21 through 25. The Flute (Fl.) part begins with a melodic line of eighth notes, followed by a half note rest and a quarter note. The Clarinet (Cl.) and Saxophone (Sax.) parts play a rhythmic eighth-note pattern. The French Horn (Cor. Fa) and Trumpet (Tr.) parts play a steady eighth-note accompaniment. The Timpani (Timp.) part has a bass line of eighth notes. The Violin (Vl.) and Viola (Vcs.) parts play a similar eighth-note accompaniment. A dynamic marking of *p* is present above the Flute staff in measure 23.

26

Fl.  
Cl.  
Sax.  
Cor. Fa  
Tr.  
Timp.  
Vl.  
Vcs.

Detailed description: This system contains measures 26 through 31. Measures 26-30 show the Flute, Clarinet, Saxophone, French Horn, and Trumpet parts with rests, indicating they are silent. The Timpani part also has rests. The Violin (Vl.) and Viola (Vcs.) parts continue with their accompaniment. In measure 31, the Flute, Clarinet, Saxophone, French Horn, and Trumpet parts re-enter with a melodic line. The Timpani part also resumes with a bass line. A key signature change to one sharp (F#) is indicated by a sharp sign on the F line of the Violin staff in measure 31.

32

Fl.  
Cl.  
Sax.  
Cor. Fa  
Tr.  
Timp.  
Vl.  
Vcs.

This block contains the musical score for measures 32 through 36. It features eight staves: Flute (Fl.), Clarinet (Cl.), Saxophone (Sax.), Cor Anglais (Cor. Fa), Trumpet (Tr.), Timpani (Timp.), Violin (Vl.), and Viola (Vcs.). The key signature is one sharp (F#). The Flute, Clarinet, and Saxophone parts begin with rests in measure 32 and enter in measure 33. The Cor Anglais and Trumpet parts also begin with rests in measure 32 and enter in measure 33. The Timpani part begins with a rest in measure 32 and enters in measure 33. The Violin and Viola parts enter in measure 32. The score concludes with a double bar line at the end of measure 36.

37

Fl.  
Cl.  
Sax.  
Cor. Fa  
Tr.  
Timp.  
Vl.  
Vcs.

This block contains the musical score for measures 37 through 41. It features the same eight staves as the previous block. The Flute, Clarinet, and Saxophone parts continue their melodic lines. The Cor Anglais and Trumpet parts continue their accompaniment. The Timpani part continues its rhythmic pattern. The Violin and Viola parts continue their accompaniment. The score concludes with a double bar line at the end of measure 41.


# TE DEUM

Charpentier

$\text{♩} = 120$



7



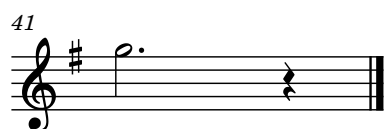
21



35



41



# TE DEUM

Charpentier

♩ = 120

8

22

36

# TE DEUM

Charpentier

♩ = 120

8

22

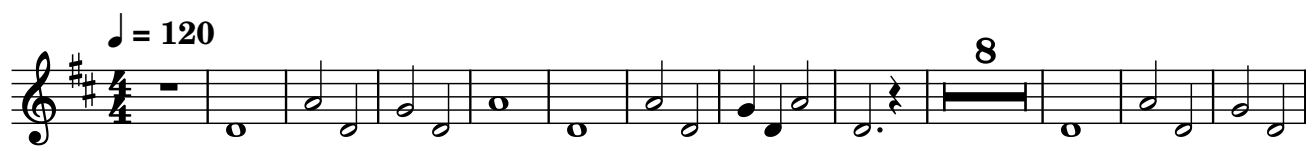
36

Corno in Fa

# TE DEUM

Smim.it

Charpentier





Tromba

# TE DEUM

Smim.it

Charpentier

$\text{♩} = 120$

8

22

36

Timpani

# TE DEUM



Charpentier

♩ = 120

8

22

36

$\text{♩} = 120$



8



15



22



30



37



♩ = 120



9



17



24



34

