

We Wish You a Merry Christmas

(English Christmas carol)

Arr. E. Neri

§

Musical score for seven guitars (Chitarra 1-7) in 3/4 time. The score covers measures 1 to 4. Chitarra 1 has a treble clef and a key signature of one sharp (F#). Chitarra 2 has a treble clef and a key signature of one sharp (F#). Chitarra 3 has a treble clef and a key signature of one sharp (F#). Chitarra 4 has a treble clef and a key signature of one sharp (F#). Chitarra 5 has a treble clef and a key signature of one sharp (F#). Chitarra 6 has a treble clef and a key signature of one sharp (F#). Chitarra 7 has a treble clef and a key signature of one sharp (F#). The music consists of a melody in Chitarra 1 and accompaniment in the other six guitars.

Musical score for seven guitars (Chit. 1-7) in 3/4 time, continuing from measure 5. The score covers measures 5 to 8. Chit. 1 has a treble clef and a key signature of one sharp (F#). Chit. 2 has a treble clef and a key signature of one sharp (F#). Chit. 3 has a treble clef and a key signature of one sharp (F#). Chit. 4 has a treble clef and a key signature of one sharp (F#). Chit. 5 has a treble clef and a key signature of one sharp (F#). Chit. 6 has a treble clef and a key signature of one sharp (F#). Chit. 7 has a treble clef and a key signature of one sharp (F#). The music concludes with a 'Fine' marking at the end of measure 8.

9

Chit. 1

Chit. 2

Chit. 3

Chit. 4

Chit. 5

Chit. 6

Chit. 7

Measure 9: Chit. 1 and 2 play G4, A4, B4, C5. Chit. 3-7 play G2, B1, D2, F2.

Measure 10: Chit. 1 and 2 play A4, B4, C5, D5. Chit. 3-7 play A1, C2, E2, G2.

Measure 11: Chit. 1 and 2 play B4, C5, D5, E5. Chit. 3-7 play B1, D2, F2, A2.

Measure 12: Chit. 1 and 2 play C5, D5, E5, F5. Chit. 3-7 play C2, E2, G2, B2.

D.S. al Fine

13

Chit. 1

Chit. 2

Chit. 3

Chit. 4

Chit. 5

Chit. 6

Chit. 7

Measure 13: Chit. 1 and 2 play G4, A4, B4, C5. Chit. 3-7 play G2, B1, D2, F2.

Measure 14: Chit. 1 and 2 play A4, B4, C5, D5. Chit. 3-7 play A1, C2, E2, G2.

Measure 15: Chit. 1 and 2 play B4, C5, D5, E5. Chit. 3-7 play B1, D2, F2, A2.

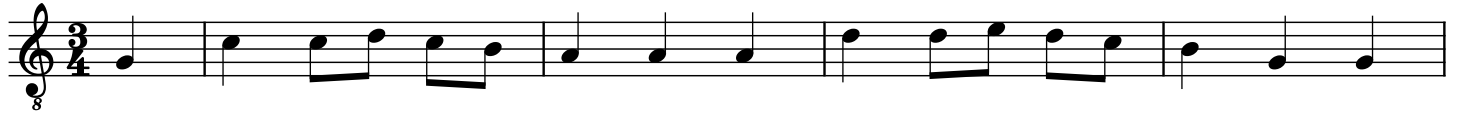
Measure 16: Chit. 1 and 2 play C5, D5, E5, F5. Chit. 3-7 play C2, E2, G2, B2.

Chitarra 1

We Wish You a Merry Christmas

(English Christmas carol)

Arr. E. Neri



5



Fine

9



13



D.S. al Fine

Chitarra 2

We Wish You a Merry Christmas

(English Christmas carol)

Arr. E. Neri

♩



5



Fine

9



13



D.S. al Fine

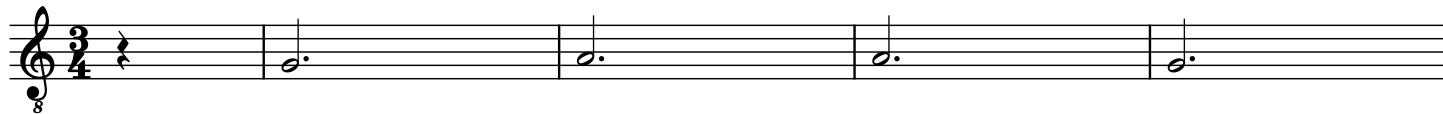
Chitarra 3

We Wish You a Merry Christmas

(English Christmas carol)

Arr. E. Neri

♩



5

Fine



9



13

D.S. al Fine



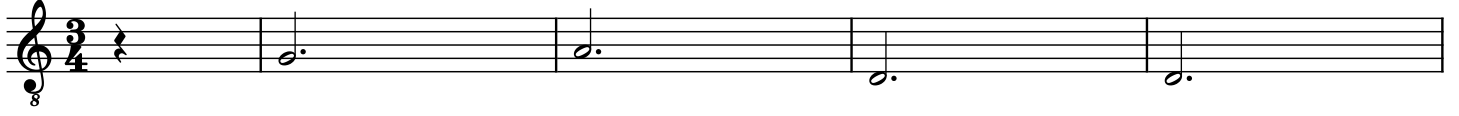
Chitarra 4

We Wish You a Merry Christmas

(English Christmas carol)

Arr. E. Neri

♩



5



Fine

9



13



D.S. al Fine

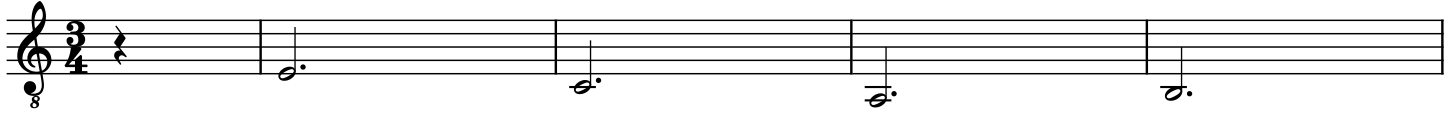
Chitarra 5

We Wish You a Merry Christmas

(English Christmas carol)

Arr. E. Neri

♩



5

Fine



9



13

D.S. al Fine



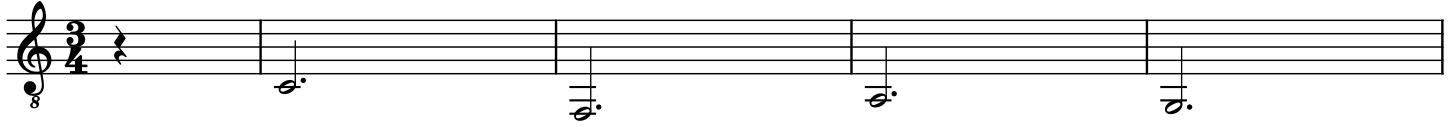
Chitarra 6

We Wish You a Merry Christmas

(English Christmas carol)

Arr. E. Neri

♩

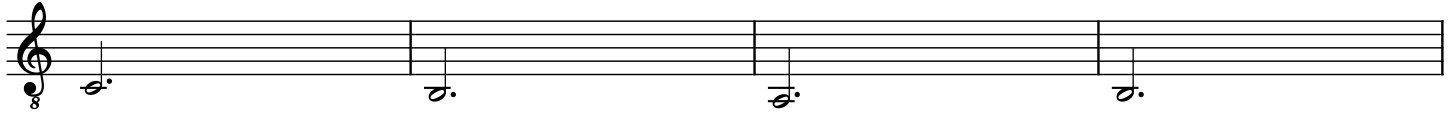


5

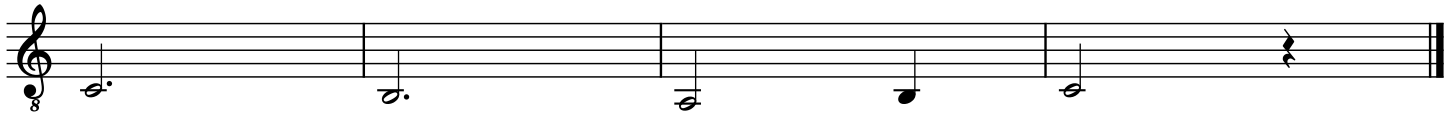


Fine

9



13



D.S. al Fine

Chitarra 7

We Wish You a Merry Christmas

(English Christmas carol)

Arr. E. Neri



The first musical staff contains five measures of music. It begins with a treble clef, a 3/4 time signature, and a key signature of one sharp (F#). The notes are: a quarter rest, a dotted quarter note (F#), a dotted quarter note (G), a dotted quarter note (A), and a dotted quarter note (B).

5

The second musical staff contains six measures of music. The notes are: a dotted quarter note (C), a dotted quarter note (D), a dotted quarter note (E), a dotted quarter note (F#), a dotted quarter note (G), and a dotted quarter note (A). The staff ends with a double bar line and a fermata over the final note.

Fine

9

The third musical staff contains four measures of music. The notes are: a dotted quarter note (B), a dotted quarter note (C), a dotted quarter note (D), and a dotted quarter note (E).

13

The fourth musical staff contains five measures of music. The notes are: a dotted quarter note (F#), a dotted quarter note (G), a dotted quarter note (A), a dotted quarter note (B), and a dotted quarter note (C). The staff ends with a double bar line and a fermata over the final note.

D.S. al Fine